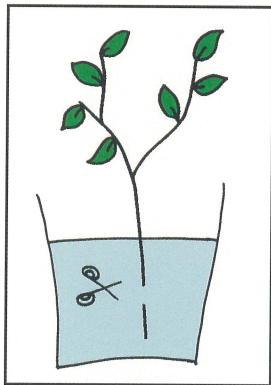


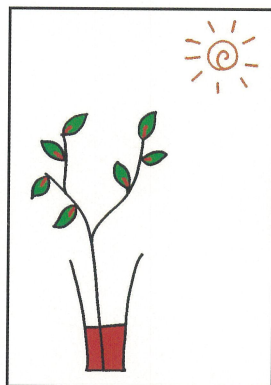
Absorb it and make it !

Processing liquid for a branch and a leaf as "Preserved-flower".

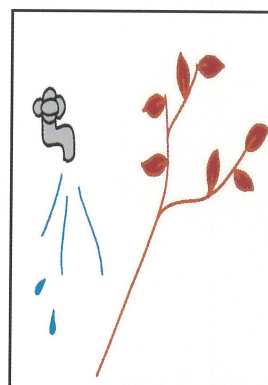
Processing is simple as you see below. Please let a fresh branch and/or leaf absorb this liquid for one to two weeks.



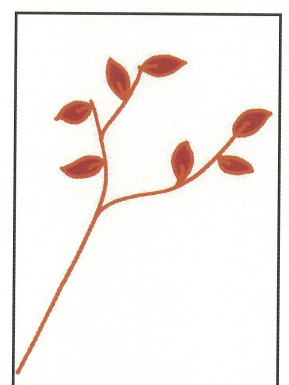
Cuts bottom of a branch.
Please use material as fresh as possible.



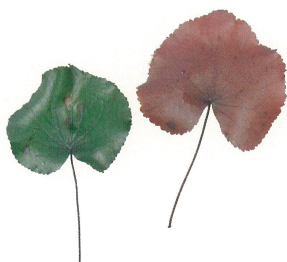
Absorb liquid.
Please process at the warm place where sunlight is.



Washing.
Please wash a cut end of a branch with water.



Completion.
No water is necessary.
Keep it in a shady place.



Beetleweed
(Green,Red)



Foxtail millet
(Red,Light-green,Yellow)



Gum tree
(Green)



Maple
(Red)

You can process bamboo and hare's-tail, barley, asparagus, solomon's seal, too.



Red



Green



Light-green



Yellow



orange



Brown



Branchy



exclusive use for a branch and a leaf.

Palacechemical.Co.,Ltd
<http://www.the-flower.biz>
Tel +81-45-784-7245
Fax +81-45-788-1524